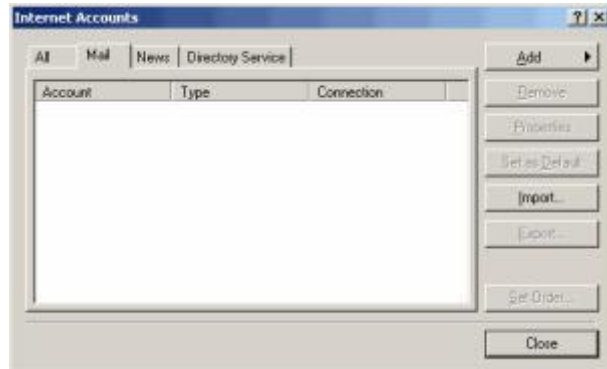




Outlook Express 5 & 6 Settings

1. Open Outlook Express and select **Accounts** from the **Tools** menu.

2. Click the **Add** button and select **Mail**.



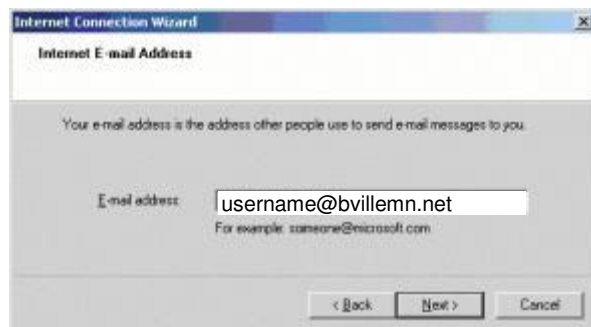
3. Enter **your name** in the **Display Name** field.

4. Click the **Next** button.



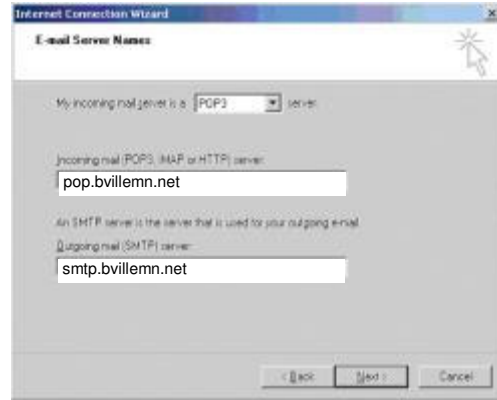
5. Enter your **E-mail Address**.

6. Click the **Next** button.



7. Select **POP3** from the drop down menu.

8. Fill in the *Incoming mail (POP3)* with **pop.bvillemn.net** and enter **smtp.bvillemn.net** in the *Outgoing mail (SMTP)* server field.



9. Click the **Next** button.

10. In the **Account name** field, enter your **Username**.

11. Enter your **password** into the **Password** field and make sure **Remember Password** is checked.



12. Click the **Next** button

13. Click the **Finish** button

14. Click the **OK** button

15. Click the **Close** button

