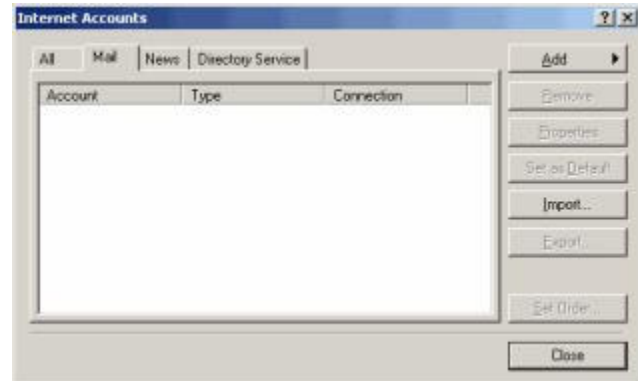




Outlook 2000 Settings

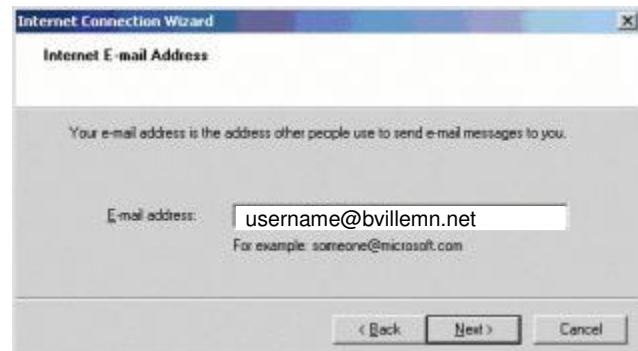
1. Open Outlook 2000
2. Select **Tools** and **Accounts**.
3. Click the **Add** button, and select **Mail**



4. Enter your name in the **Display Name** field.
5. Click the **Next** button.



6. Enter your **E-mail Address**.
7. Click the **Next** button.



8. Select **POP3** from the drop down menu.

9. Fill in the *Incoming mail (POP3)* with **pop.bvillemn.net** and fill in the *Outgoing mail (SMTP)* server field with **smtp.bvillemn.net**.

10. Click the **Next** button

11. In the **Account name** field, enter your **username**.

12. Enter your **password** into the **Password** field

13. Click the **Next** button

14. Click the **Finish** button

15. Click the **OK** button

16. Click the **Close** button

