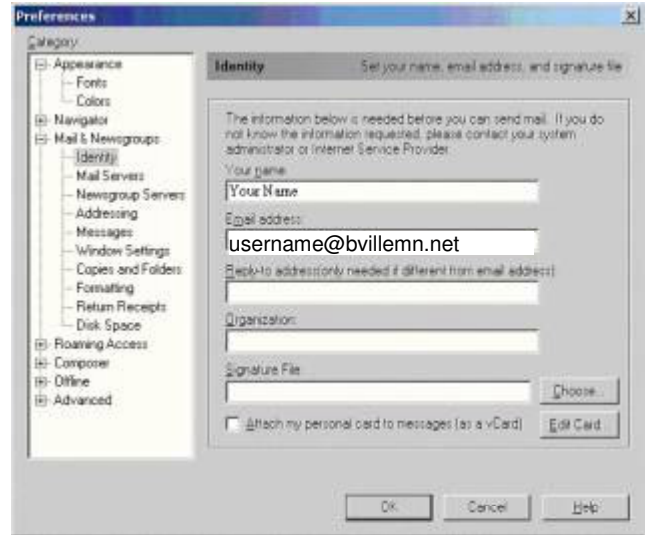




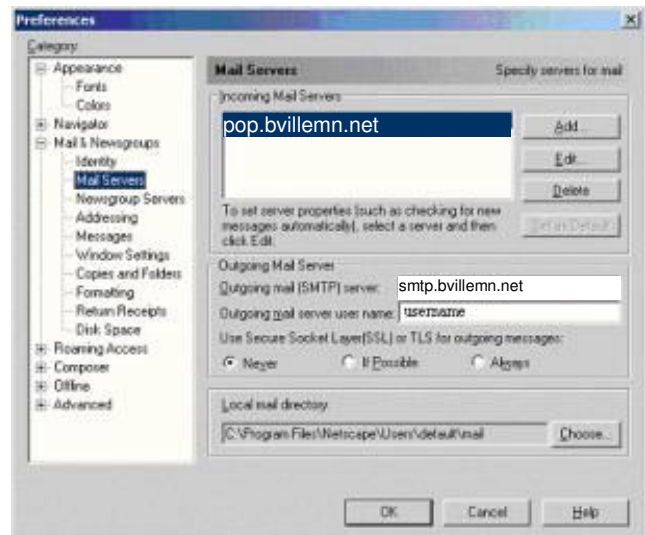
Netscape 4 Mail Settings

1. Open **Netscape**.
2. Select **Preferences** from the **Edit** menu.
3. Click on the **+** next to **Mail & Groups**.
4. Click on **Identity**.
5. Fill in the **Your Name** field.
6. Fill in the **E-mail address** field.
7. Click on **Mail Servers** on the left.



8. Fill in the **Outgoing mail (SMTP)** server field with **smtp.bvillemn.net**

9. Enter your username.
10. Click the **Add** button.



11. Fill in the **Incoming mail (POP3)** server fields with **pop.bvillemn.net**

12. Mail Server type should be set to **POP3 Server**

13. Fill in the Mail server user name field with your **username**.

14. Check **Remember mail password**.

15. Click the **POP** tab.

16. Uncheck the box that says **Leave messages on server**.

17. Click **OK**.

18. Click **OK**.

