



Windows ME Dialup Settings

1. Click on **Start**, point to **Settings**, and then click on **Dial-Up Networking**.

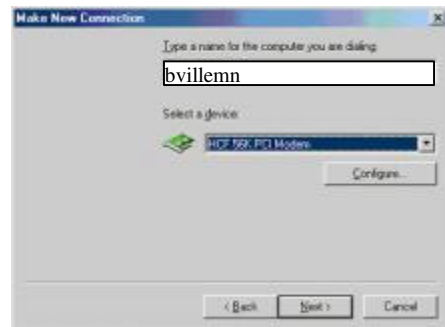
2. Double-click the **Make New Connection** icon.



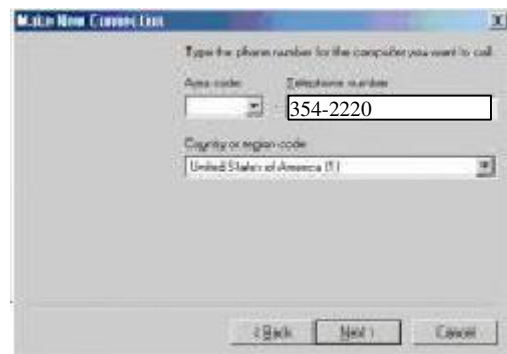
3. Type in **bvillemn** for the name of computer you are dialing.

4. Then select your modem name from the drop down menu (it should be selected already).

5. Click the **Next** button.



6. Leave the Area code blank and type in 354-2220 in the telephone number.



7. Click the **Next** button

8. Click the **Finish** button

9. In the **Dial-up Networking** window, right click on the **bvillemn** icon and choose **Properties**.

10. Click the **Networking** Tab.

11. Under **Advanced Options** the only option that should be checked is **Enable software compression**.

12. Under **Allowed network protocols** the only protocol that should be checked is **TCP/IP**.

13. Then click on the **TCP/IP Settings...** button.

14. In the **TCP/IP Settings** window, make sure **Server assigned IP address**.

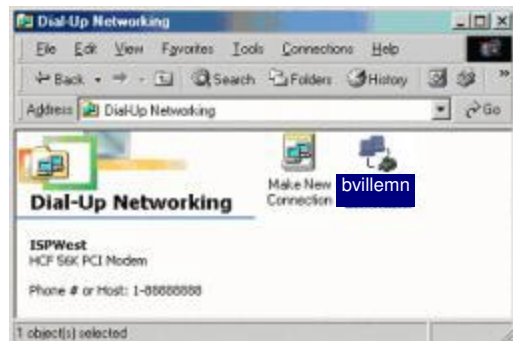
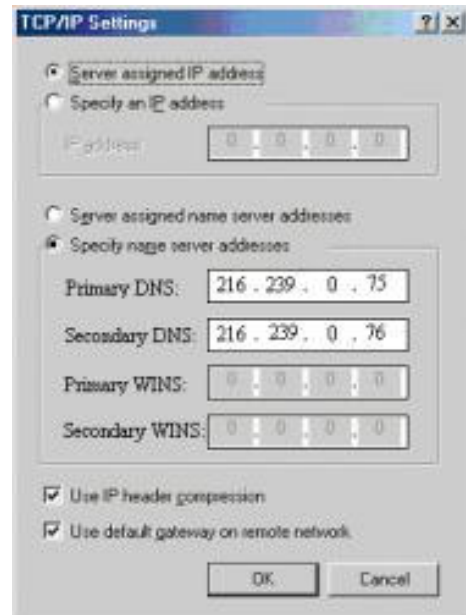
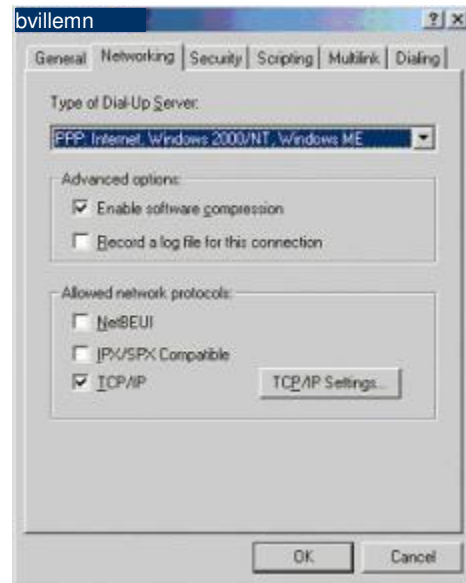
15. Select **Specify Name Server Addresses**.

16. Enter **216.239.0.75** in the **Primary DNS** field and enter **216.239.0.76** in the **Secondary DNS** field.

17. Also, make sure that both **Use IP header compression** and **Use default gateway on remote network** are checked.

18. Click the **OK** button.

19. Now, in the **Dial-up Networking** window, double click on the **bvillemn** icon.



20. Enter your **username** and your **password**.

21. Make sure **Save Password** is checked.

22. Click the **Connect** button to connect to the Internet.

